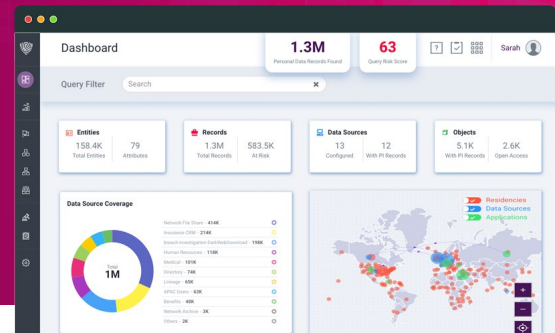


BigID Data Intelligence Platform

- ▶ Foundational Discovery-in-Depth for **unmatched data discovery and insight**
- ▶ **Broadest data coverage** in the market for data on-prem, in the cloud, and everywhere in-between
- ▶ **Extensible App & API framework** for expandable functionality



BigID is a modern data intelligence platform for data privacy, protection and perspective - built on a foundation of discovery-in-depth.

With BigID, organizations can get deep insight into what and whose data they collect, process and share across any data in the data center or cloud; at rest or in motion. Organizations can leverage BigID’s first-of-its-kind App and API Framework to action their data in privacy, security or data governance.

- ▶ **Discovery-in-Depth:** First-of-its-kind data discovery that combines ML based cataloging, classification, cluster analysis and correlation in one solution. Leverage best-in-breed and best-in-suite data discovery so that privacy, security and data governance have a common source of data truth.
- ▶ **Unmatched Data Coverage:** Apply Discovery-in-Depth across more types of data sources and data pipelines in the cloud or data center than any other vendor in the market.
- ▶ **Extend With Apps and APIs:** Future-proof your data investment with BigID, third party apps, and API-based integrations that leverage deep data insight to ensure better data compliance, security, and value.

Support for all your data.

Coverage where you need it, at petabyte scale.

- Unstructured files & email
- Structured databases
- NoSQL (including Couchbase)
- Big Data & Data Lakes
- Pipelines (incl. Kafka & Kinesis)
- IaaS (Aws, Azure, GCP, IBM)
- Analytics (incl. Databricks)
- Applications (incl. SAP, SFDC)
- API data streams

Agile infrastructure.

API-centric microservices architecture built to run in a flexible agentless model for on-prem, cloud, hybrid, or multi-cloud deployment.

A Modern Data Intelligence Platform

BigID is a modern data intelligence platform built to scale, based on Docker and Kubernetes architecture: combining discovery-in-depth (with more ways to discover data using classification, cataloging, cluster analysis, and correlation), unmatched data coverage for all types of personal and sensitive data (in data centers and the cloud; at rest or in motion), and an extensible app framework to take action on privacy, protection, and perspective.

- ▶ **Automatically Discover, inventory, and map** all types of personal and sensitive data
- ▶ Leverage **advanced ML techniques** including NER and deep learning
- ▶ Go beyond compliance checklists with an **end-to-end framework for privacy & risk**
- ▶ Discover **dark data** and **protect crown jewels** with intelligent insight and remediation
- ▶ Fulfill **governance and catalog initiatives** with a **unified inventory**
- ▶ **Integrations** with leading case management, GRC, privacy, security, data governance products

How It Works

Unmatched Data Coverage + Discovery-in-Depth + Insights + Actions

Data Privacy Apps

- PI / PII Inventory
- DSAR Fulfillment Automation
- Data Processing & Sharing
- Consent Governance
- Privacy Portal

Data Protection Apps

- Remediation
- Data Access
- Labelling
- Breach Data
- Data Risk

Data Perspective Apps

- Data Quality
- Data Retention
- Stewardship Self-service
- Advanced Profiling
- Data Lineage

Data Discovery Foundation

Discover, identify, and classify all of your data, everywhere - with BigID's patented Discovery-in-Depth technology

Catalog

Classify

Cluster Analysis

Correlate

Unstructured · Structured · Semi-structured · Big Data · NoSQL · Data Lakes · Data Warehouses · OCR Applications · SAP · Email · Messaging · Mainframe · Data Pipelines · IaaS · SaaS · APIs · Network

